

Notebook Correlator

Correlux P-200



Benefits:

- ▶ **Reliable, fast results from automation**
- ▶ **Process integration**
- ▶ **High-end technology**



sebaKMT

Notebook Correlator

Description

The Correlux P-200 is a PC-based correlator system for locating leaks in water pipes. The latest, most sophisticated correlation methods help the user to avoid incorrect measurements and expensive unnecessary digging.

Automatic plausibility tests make measurement even more reliable. The integrated damage sketch program means leaks can be easily recorded in detail.

The P-200 allows you to quickly and efficiently locate leaks in pipes of any material; with its innovative automated frequency analysis, plus manual override, it is the perfect correlator for anyone looking for leaks.



State-of-the-art user interface



The attractive user interface of the Correlux P-200 is a highlight in itself. Naturally, it is also functional: the signal strength, coherence and individual signal spectra are all clearly shown beside the correlation function in the user's

field of vision. You can alter the appearance of the user interface with just a few clicks to customise it as required.

Fast, reliable measurement – the number one priority

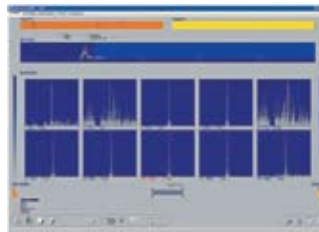
The first measurement - known as the overview measurement - tells you whether there is a leak in the pipe section. Only then do you enter the pipe data. If this does not match the measured data, the system tells you straight away to avoid possible false measurements, speed up and simplify the process of leak location. The Correlux P-200 also constantly monitors measurement results and signal quality. If there are any irregularities, it tells you immediately and suggests action to improve the measurement.

The measurement quality factor



This automatically calculated factor gives you even more certainty in the correlation results. The Correlux P-200 statistically analyses the measurement and graphically displays how reliable it is.

Automatic filter analysis

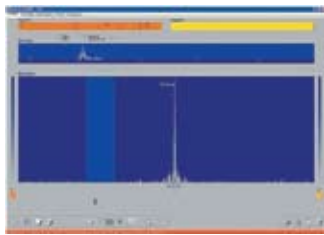


Which filter settings are the best? The Correlux P-200 answers this question using automatic filter analysis. After the analysis, it suggests a particular filter setting to achieve the best result. If you want to set your own filters, you can

do this by simply clicking your mouse. Or, for example, would you like to cut out the 50 Hz frequency of a nearby electricity substation? No problem – the Correlux P-200 offers that function too.

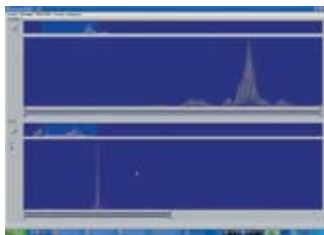
Correlux P-200

Masking noise



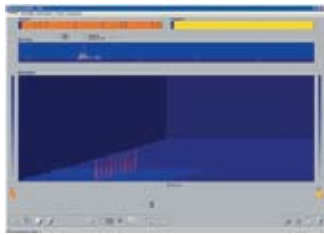
Concentrate on the essentials. Peak-suppression cuts out noise from the correlation curve. Taps turned on or other noise sources can be easily masked.

Multi-correlation



You can only tell how accurate a reading is after a test correlation at another measuring point. To do this, a transmitter is moved and another measurement carried out. With multi-correlation, these two measurement curves – or as many saved measurements as you like – are clearly shown together for comparison. If the results match, you have almost certainly found the leak.

3D correlation analysis

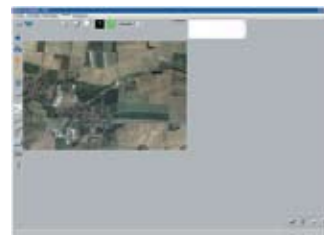


Is the measured noise constant? Is there noise interference in the pipe section? Often, intermittent ambient noise, such as taps turned on, masks the noise of the leak. The 3D analysis enables you to observe measurement results over a lengthy period of time. Peaks which change during the measuring period are unlikely to be leaks. This guides you accurately to the leak.

Speed measurement

If you do not know the pipe data, you can carry out automatic speed measurements with the Correlux P-200. It guides you through a menu so that you can quickly and easily find the correct pipe data.

Innovative graphical documentation options



The integrated sketch program allows you to record your measurements in detail. Connected to an additional GPS antenna, the Correlux P-200 registers geographical co-ordinates and saves them. The data can be recalled

later to assign measurements in GIS systems for further graphical documentation. Naturally, you can record leak noise and save it later. This means you can re-correlate at any time later.

System components – State-of-the-art and powerful

The software for the P-200 runs on all common PCs and notebooks. State-of-the-art computing routines and display methods make it easier to locate leaks.

Compact and light – the Correlux USB E-Box

Carry the USB box on your belt when making correlation measurements in the field. The box is powered entirely by the PC via its USB port. Additional batteries are not required. Headphones are connected directly to the box so that you can listen for the clear leak noise signals sent by the transmitters. By selecting the audio channel on the USB box, you can also listen to both channels separately.

Transmitters and microphones – Sophisticated, rugged and proven in the field

The SebaKMT transmitters are characterised by their powerful performance over long ranges, their fast suppression of ambient noise and their rugged design. To record the leak noise, you can use either highly sensitive piezo electronic microphones or hydrophones. The latter are particularly suitable for plastic pipes and for long distances.

We are happy to provide you with information!

Scope of delivery

- ▶ Correlux USB E-Box
- ▶ Correlux P-200 software
- ▶ TR A and TR B transmitters, each with a piezo sensor
- ▶ Headphones
- ▶ 2 AD S42 valve adapters
- ▶ Bag for carrying the transmitters
- ▶ Belt bag for Correlux USB E-Box
- ▶ USB lead
- ▶ Charger for transmitters
- ▶ 12 V charger lead with distributor lead
- ▶ Nylon cords
- ▶ Antenna with magnetic base



Available accessories

- ▶ Hydrophones
- ▶ Valve adapter

Recommended notebook

- ▶ Panasonic Toughbook Type CF 19

The benefits at a glance

Reliable, fast results from automation

- ▶ Automatic filter setting by multiple frequency noise analysis
- ▶ Automatic overview measurement
- ▶ Multi-position correlation results comparison
- ▶ Off-site or off-line correlation from saved data
- ▶ 3Dimensional time-line correlation analysis
- ▶ Manual "Expert" override settings

Process Integration

- ▶ Integrated positioning with GPS antenna
- ▶ Optimised for working with tablet and rugged PCs
- ▶ Powered via USB connection
- ▶ Menu guided operation
- ▶ Integrated sketch program

High-end technology

- ▶ Sophisticated radio technology for long-range operation
- ▶ Audio channel can be selected for listening to leak noises
- ▶ Digital signal processing

**For more information, see:
www.sebakmt.com**

SebakMT
Dr.-Herbert-lann-Str. 6
96148 Baunach/Germany
Tel. +49(0) 95 44 - 6 80
Fax +49(0) 95 44 - 22 73
sales@sebakmt.com
www.sebakmt.com

Our range of products: Equipment and systems to locate faults in power and communications networks, as well as for leak location on pipe networks · line location equipment · seminars · service · contracting.

Technical data subject to change without notice.

ISO 9001:2000

sebakMT is a registered trademark of the sebakMT group
LFT_Correlux P-200_eng_2007_13